

**ENGAGE**

TOWARDS MATURITY IN CHRIST



**EQUIP**

EVANGELICAL STUDENT NETWORK

**SEND**

SIM ZIMBABWE



**SIM ZIM in partnership  
with the church**

**Reaching students towards maturity in Christ (  
Col 1:28)**

# OVERVIEW

The few years one spends at university or college can be formative in a variety of ways. While most people, both parents and students, would agree that this is a formative time in terms of career path, many fail to recognise the big ways in which their whole lives are impacted by their experience at university or college. More importantly, the freedom which comes with uni life and being far away from parents or guardians means many young people will need to decide where they personally stand when it comes to faith and religion. This decision will affect not only the rest of their lives here on earth, but their eternity.

Many would agree that the world we live in needs more competent and faithful leaders both in the church and society. The rampant corruption we daily bemoan is a shocking reality given that over 85% of our population here in Zimbabwe profess to be Christian, according to the recent census figures. Could it be the 15% peddling all this corruption which has decimated our nation? I would like to suggest that is not the case. Our context is that of nominal christianity where many are quick to identify as Christians while they deny the true transformative power of genuine faith in Christ ( 2 Timothy 3:5).

**Evangelical Students Network (ESN)**, seeks to be the mouth and hands of God, bringing the gospel to university and college students in Zimbabwe. We prayerfully seek to engage with students in a free and unthreatening manner, while creating opportunities to equip them through discipleship and training as we hope to send them out from the campus as mature followers of Jesus who are faithful and capable leaders for the church and society. However, our ultimate goal is to see them joining the multitude of believers who will be ushered in to the new heavens and the new earth when Christ returns. This document, serves to provide more details on how we seek to do this, in partnership with other friends both local and international, who are driven by the same gospel convictions.

In Christ,

Tawanda and Shupi Masango

SIM Zimbabwe | University & College Students Outreaches  
M: +263 778 105 788 Email: tawanda.masango@sim.org  
Website: [www.sim.org](http://www.sim.org)

*Crossing barriers with love to those living and dying without Christ*



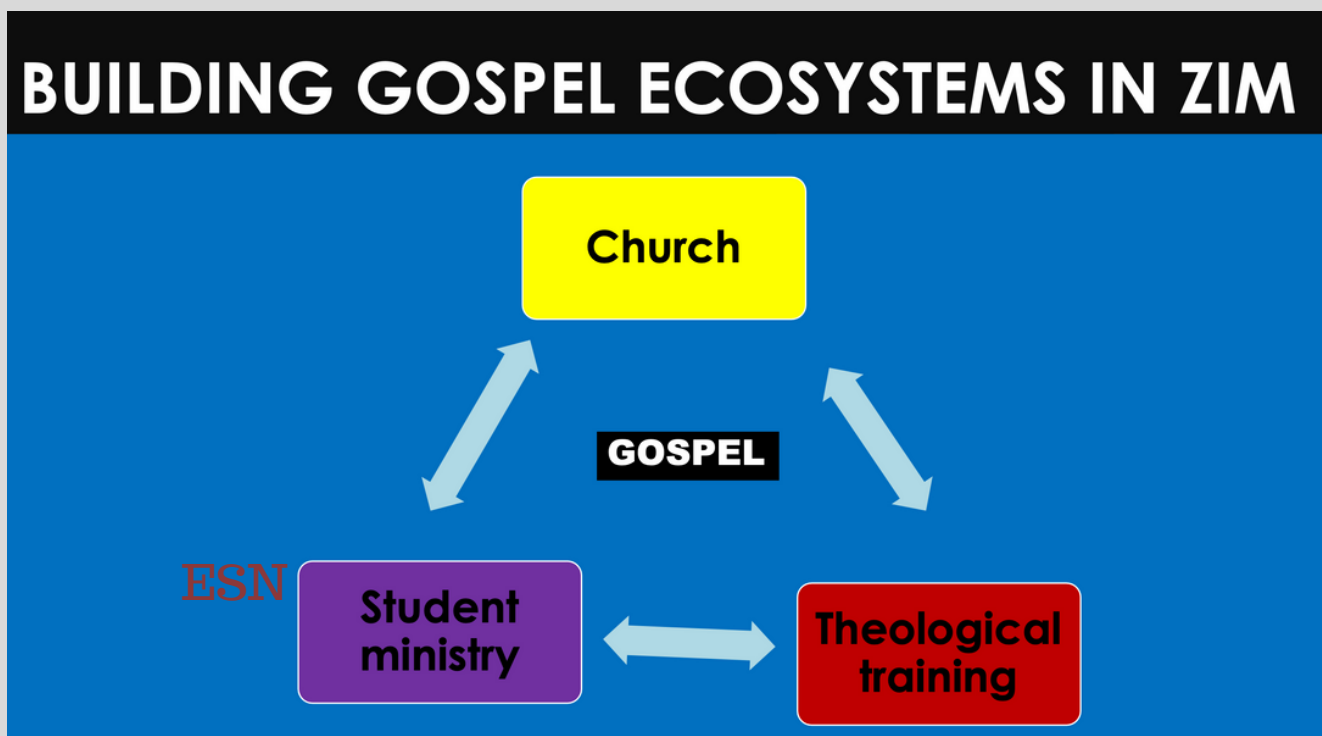
HE IS THE ONE WE  
PROCLAIM, ADMONISHING  
AND TEACHING EVERYONE  
WITH ALL WISDOM, SO THAT  
WE MAY PRESENT EVERYONE  
FULLY MATURE IN CHRIST.

COL 1:28



# OUR IDENTITY

ESN is a reformed evangelical campus ministry through which SIM Zimbabwe seeks to partner with local churches and other para church organisations who agree with the theological convictions and core ideology of ESN in reaching students with the gospel. At present ESN, exists as a registered society at the National University of Science and Technology [NUST] in the city of Bulawayo. At NUST, ESN works with the approval and blessings of the university chaplain and our vision is to strengthen and refine this model with the hope of seeing this grow to other places around the country. We are deeply convinced that under God, these partnerships will grow into a **gospel ecosystem** of faithful, Christ-centered ministries that support and feed into one another. Our prayer is that this model can be replicated in other cities around Zimbabwe, resulting in a strong witness of Jesus on campus and the planting and strengthening of Gospel-centered churches that work hand in glove with the campus ministries for the good of the Kingdom. An additional component to this ecosystem is the theological training scheme through which men and women from the campus and the church can be equipped for full-time gospel work. The diagram below is an attempt to express this in visual form:



ESN presents an opportunity for students from different denominations to interact with other students who hold different views on matters of Biblical interpretation and Christian living. Such interaction, if done well, will allow the students to consider various ways of biblical interpretation resulting in the strengthening of their convictions on the Bible.

# 3 PARTNER CHURCHES

Churches that partner with ESN must be committed to the core commitment of ESN . There are three categories of church partnership :

## Local Leading Church ( LLC)

This role requires a deeper level of commitment to and theological alignment with the core ideology of ESN.

It undertakes primary responsibility for resourcing the work on that campus, including staffing it with a Campus Director, providing the bulk of the financial resources to cover operational costs, sending volunteers to serve on the ground, prayer, and so on.

For ESN NUST, Living Hope Church is the LLC

## Local Supporting Church ( LSC)

This is a local church that supports the campus ministry.

This role requires theological alignment with the core ideology of ESN.

Its support may be varied, including staffing the campus ministry with student workers, providing financial resources, sending volunteers to serve on the ground, prayer, and so on.

## Remote Church ( RC)

This is a church that supports the campus ministry, but is not local and so less able to be actively involved in the day to day ministry on the ground.

This role requires theological alignment with the core ideology of ESN.

Its support may be varied, including providing financial resources, sending volunteers or short-term mission teams to serve on the ground, prayer, and so on.

# OUR BELIEFS

## ABOUT GOD:

We believe that there is one God who exists in three persons , the Father, the Son and the Holy Spirit. All three persons of the God-head are co-equal in deity and their eternal existence in a perfect relationship. God is all powerful and sovereign over all things including creation, revelation, salvation and judgement.

## ABOUT HUMANITY :

We believe man and woman are created in the image of God and therefore all humanity has a unique dignity which emanates from their special place in God's creation and their capacity to enter into a relationship with their creator (Genesis 1: 2-28). Instead of living in perfect relationship with God under his rule, the first humans rejected God's rule and in the first act of sin they attempted to be rulers of their own life , deciding what is right and wrong, and this was the Fall of humanity which made man guilty before God and therefore deserving of his righteous judgement ( Genesis 3; Romans 3: 9-11). Ever since, every human being is born a sinner, unable to save themselves apart from God's gracious work.

## ABOUT THE GOSPEL :

We believe that the gospel is the good news about the life, death and resurrection of Jesus , which is God's gracious gift to save humanity from the judgement they deserve through giving up his Son to take the sin of man while those who believe in him will receive the free gift of the forgiveness of sins and life everlasting. We believe this momentous message of the gospel should be central to all our teaching and should affect all areas of our lives. We see that there is need to guard the gospel through faithfully proclaiming it without shame for it is the power of God to bring salvation to all humanity ( Romans 1: 1-15)

## ABOUT THE BIBLE :

We believe the Bible, both the Old Testament and New Testament as God's revelation to us. It is God- breathed and infallible which makes it the final authority in matters of faith, conduct and experience ( 2 Timothy 3:16; 2 Peter 1:20) . We believe that God has provided us with all the revelation we need for salvation and Christian living and therefore we seek to measure and judge any other revelation in accordance with the clear and given word of God in the Bible. We accept no other authority whether man or institution which goes against what God has revealed in his Word

## ABOUT THE HOLY SPIRIT :

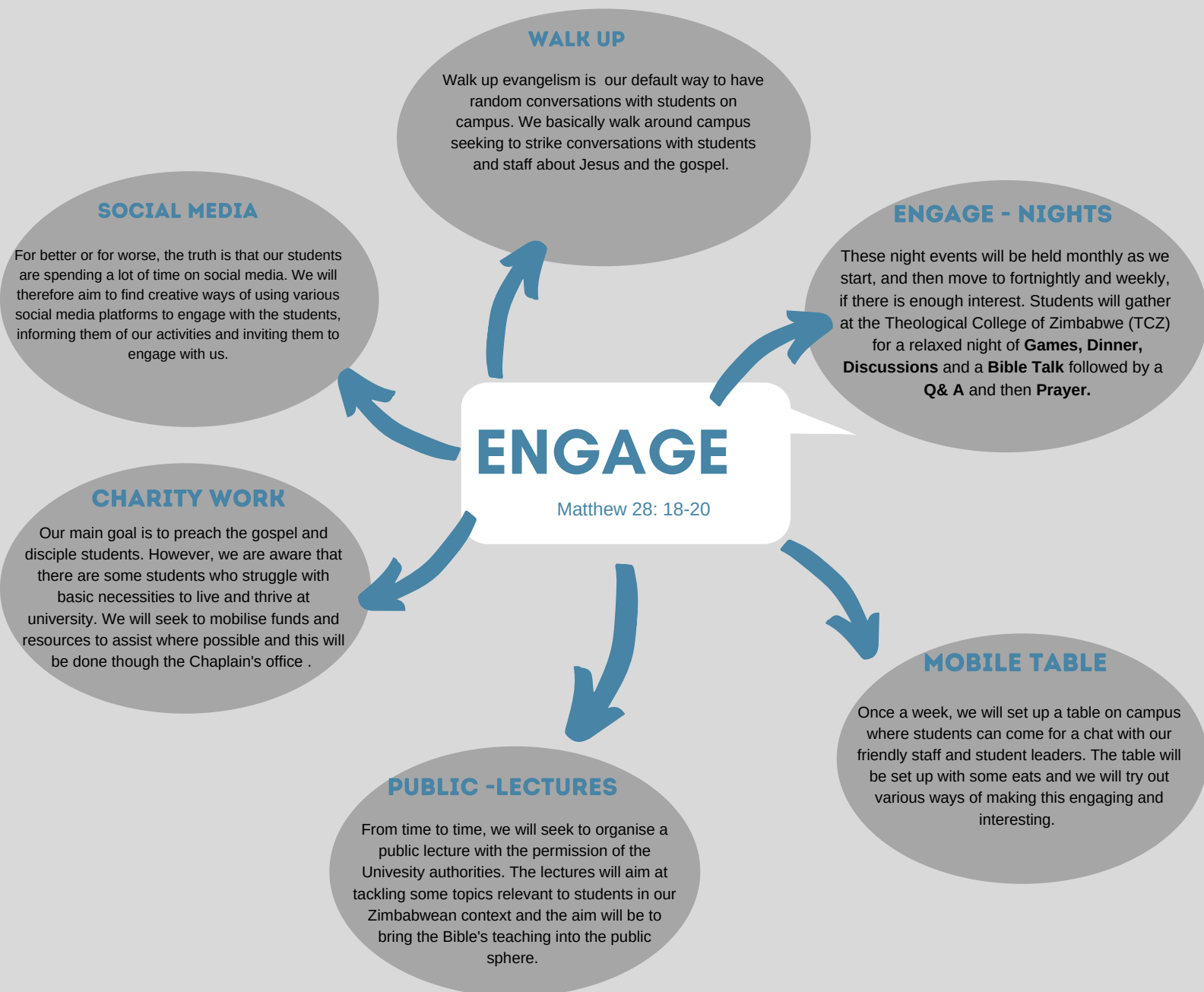
We believe the Holy Spirit , who is the third person of the God-head is active in the lives of Christians from conversion and continues the work of sanctification until Christ returns. The Holy Spirit convicts the world of sin, of righteousness and of judgement ( John 16: 8-11).



# OUR STRATEGY

## ENGAGE

The ministry of ESN thrives through **intentional** and **varied** ways of engaging with the students. ESN uses a variety of ways to create contact points with the students so that we can build relationships with gospel proclamation as our ultimate goal.



# OUR STRATEGY

## EQUIP

As we engage with students, our aim is to proclaim the gospel to them and our final goal is to see them grow into mature Christians who understand the gospel, are equipped to live gospel shaped lives and share the same gospel in any context. Under God, we hope to see this happening through some of the following activities:

### BIBLE STUDY

Bible study is the heart beat of our ministry as it presents an opportunity for students to engage with the bible in a friendly environment where they can ask questions. This will be done in **ONE TO ONE** and **SMALL GROUP** setting.

### BIBLE TALKS

We are committed to the expository preaching which is done book by book and so we will seek to expose our students to such bible teaching. Initially this will be done at TCZ with the hope of moving it to the campus when a suitable venue has been found.

### SHORT TERM MISSIONS

In obedience to the great commission (Matt 28), we would like to see our students growing in mission consciousness. Part of this will be achieved through regular mission on campus and our occasional mission trips to places near and far.

## EQUIP

Colossians 1:28

### SUMMIT CONFERENCE

SUMMIT presents a wonderful opportunity for deeper relationship building and more time in God's Word as we spent 3 days away with students every year. We will use this time to look at some of the big theological issues and there will be a lot of time for students to do some work in the Bible.

### LEADERS CAMP

The model of our ministry is that of student-staff partnership. We would therefore like to be intentional in growing student leaders who will work closely with our staff team and one of the ways we will do this is through the annual leaders camp.

# OUR STRATEGY

## SEND

The transient nature of our ministry to students means that every year we have a group leaving us. To us this is a positive thing as it serves to strengthen the Gospel Ecosystem through sending mature Christians to the church and the market place. We hope to send :

### MATURE CHRISTIANS

Our hope and prayer is that one of the benefits of student ministry to the church is the sending out of mature, well trained graduates who will be committed and active members in the church, both locally and globally.

### MINISTRY WORKERS

We have no doubt that through student ministry, some of the students will be convinced that it is worthy laying down their career dreams for gospel work. The same was true for Jesus' disciples and many Christians over the centuries . We therefore seek to identify and encourage such students towards a pathway to full time ministry with us, the wider church or other para -church organisations

## SEND

### GOSPEL PARTNERS

Inspired by the great partnership between Paul and the Philippians, we seek to see some of our graduates becoming committed gospel patrons through **PRAYER** and **GENEROSITY**. We hope this will go a long way in creating local and sustainable support for ministries in our struggling economy .

### TRUSTED LEADERS

The need for godly and competent leaders cannot be over emphasised. We hope that a combination of bible teaching , discipleship and our life skills training will produce such leaders for the church and society.

### MISSIONARIES

We are very keen to see some of our students taking world mission seriously. We will therefore work closely with some mission organisations to facilitate the mobilisation of students who may have a heart to serve in places and countries that are gospel poor.



# APPRENTICE TRAINING

## *EQUIPPING GOSPEL WORKERS FOR THE CHURCH*

The need for faithful gospel workers cannot be over emphasised. As Jesus said to his disciples, the harvest is ready and the workers are few ( Luke 10:2), we are therefore called to pray that the Lord would raise more workers for the ready harvest. Later, the Apostle Paul, faced with the same need, charges Timothy, who he had trained , to intentionally look for faithful people to whom he can entrust the gospel with the hope that they will pass it to future generations ( 2 Tim 2:2). The responsibility to pass on the gospel baton remains with us and we see university ministry as a fertile ground for raising workers for the gospel.

To that end, our apprentice training program provides students with an opportunity to come back and serve as apprentices with ESN for a period of two years . During this time, they will get practical experience in handling various ministry tasks [ **competence** ] under a trainer who will also seek to help them grow in their understanding of the Bible [ **convictions**] and encourage them in living in light of that [ **character** ] . This two year period will help the apprentice discover their God given gifts and as they discuss with the trainer and then work out how they can use those gifts for the good of the Kingdom, whether as full time gospel workers or as faithful witnesses in their chosen career.

Our hope and dream is that through this training scheme, we will send out men and women who are equipped and ready to share the gospel ,as they serve in various capacities with the church and para church organisations within Zimbabwe and beyond. Under God, we hope to develop an apprentice training pipeline that includes sending them for theological training if they are interested in full time ministry.



# ESN MINISTRY GOALS

We believe that while the Lord has the last word on everything, there is a clear invitation for us to make and commit our plans and goals to him. Below are some of our goals for the next 5 years:

TIME FRAME	AREA OF MINISTRY	SET - GOALS
2023	Engage	<ul style="list-style-type: none"> <li>Engage at least 200 students every week from across all our platforms.</li> </ul>
2023	Equip	<ul style="list-style-type: none"> <li>100 students to be involved in bible study every week</li> <li>50 students attending bible talks and engage nights weekly</li> </ul>
2023	Send	<ul style="list-style-type: none"> <li>100 students to be commissioned and send out yearly</li> <li>50 churches in our database of where graduates are going</li> </ul>
2023	Ministry Apprenticeship	<ul style="list-style-type: none"> <li>At least 5 apprentices to have been trained and heading into theological training , serving in gospel poor places</li> </ul>
2023	Partnership	<ul style="list-style-type: none"> <li>At least 10% of ministry costs to be funded by graduates</li> <li>500 people signed up to receive ministry prayer news</li> </ul>





## 2021 GOALS

We believe that while the Lord has the last word on everything, there is a clear invitation for us to make and commit our plans and goals to him ( Proverbs 16:3) . Below are some of our goals for 2021:

TIME FRAME	AREA OF MINISTRY	SET - GOALS
DEC 2021	Engage	<ul style="list-style-type: none"> <li>Engage at least 100 students every week from across all our platforms.</li> </ul>
DEC 2021	Equip	<ul style="list-style-type: none"> <li>30 students to be involved in bible study every week</li> <li>50 students attending bible talks and engage nights weekly</li> </ul>
DEC 2021	Send	<ul style="list-style-type: none"> <li>50 students to be commissioned and send out yearly</li> <li>15 churches in our database of where graduates are going</li> </ul>
DEC 2021	Ministry Apprenticeship	<ul style="list-style-type: none"> <li>At least 2 apprentices to be in training as they prepare to go to Bible College</li> </ul>
DEC 2021	Partnership	<ul style="list-style-type: none"> <li>At least 10% of ministry costs to be funded by graduates</li> <li>500 people signed up to receive ministry prayer news</li> </ul>

### Other goals for 2021

- To have a clearly written down strategy for the expansion of ESN beyond Bulawayo with clear opportunities for potential SIM Missionaries to join in this work.
- To have some form of interaction with other SIM Workers who are involved in university ministry.
- To work towards local support means so that the ministry can be locally supported and hence sustainable in the long term.



# CONTACT US

## Physical address

Suite D4/D5  
Theological College of Zimbabwe  
Gwanda Road at Riverside  
Bulawayo

## Contact details

Email: [tawanda.masango@sim.org](mailto:tawanda.masango@sim.org)  
[shupi.masango@sim.org](mailto:shupi.masango@sim.org)  
Mobile : +263778105788

10

# PARTNERSHIP

**PRAY**

**GIVE**

**JOIN**

SIM ZIMBABWE 

 **SIM**  
*By Prayer*

**Towards maturity in Christ! Col 1:28**